

MEDICAID FACTS

Medicaid provides essential health coverage for millions of low-income people – reducing health disparities, increasing access to care, and creating countless positive ripple effects throughout the country, including here in Colorado. Individuals with disabilities and chronic illnesses, rural communities, small business owners, and families all rely on Medicaid. Medicaid serves as the backbone of Colorado communities and the health care system overall by providing access to needed care and supporting our state and local economies.



1 in 5

Coloradans is enrolled in Medicaid or CHP+

1 Medicaid helps Coloradans thrive

One in five Coloradans (1.3 million) is enrolled in Health First Colorado (Colorado's Medicaid program) or Child Health Plan *Plus* (CHP+).

Medicaid covers four in 10 births in the state, three in 10 working-age adults with disabilities, and one in three children.ⁱ Cuts to Medicaid would take health care away from those who need it most.



In 2024, Medicaid made up

21%

of hospital payments

2 Hospitals are dependent on Medicaid funding

Medicaid helps keep health insurance affordable and accessible for all Coloradans. In 2024, Medicaid made up 21% of hospital payments.ⁱⁱ Hospitals, particularly in rural areas, depend on Medicaid funding to retain staff and deliver quality care. A drop in insured patients would increase uncompensated care for hospitals, driving up costs elsewhere and putting strain on the entire health care system.ⁱⁱⁱ

3 Medicaid is efficient

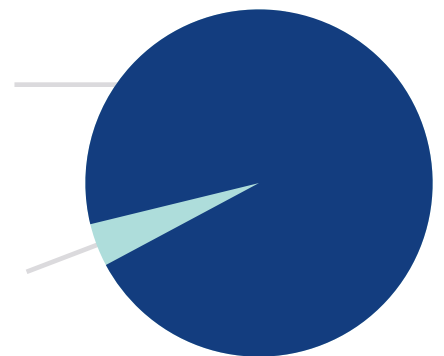
Costs per Medicaid member are much lower than for private health insurance. Medicaid is the most efficiently run health plan in Colorado – 96% of the budget goes directly to care providers, with only 4% allocated to administration^{iv} – and Colorado ranks twelfth lowest nationwide in Medicaid spending per beneficiary.^v

96%

goes to care providers

4%

goes to administration



4 Work requirements create waste and put coverage at risk

Work requirements create administrative waste and jeopardize health care for low-income Coloradans. Most adult Medicaid members in the state (75%) are employed.^{vi} The remaining 25% are largely not working due to caregiving responsibilities, being students, or having a disability. 120,000 Coloradans are expected to lose Medicaid coverage due to work requirements.^{vii} But many thousands more, who remain eligible, could face wrongful terminations driven by administrative hurdles, difficulty navigating reporting systems, and confusion caused by complex eligibility processes.^{viii}



120k

Coloradans are expected to lose Medicaid coverage due to work requirements.

42%

think Medicaid funding should increase



40%

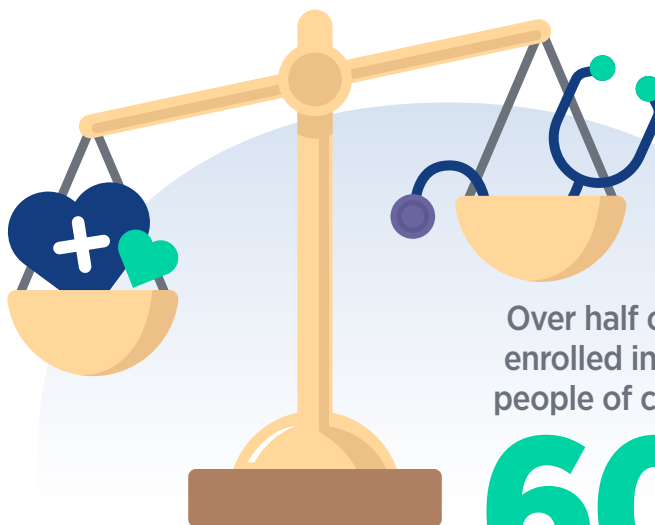
think Medicaid funding should be kept the same

5 Support for Medicaid is widespread and bipartisan

Majorities of Democrats, Republicans, and independents are opposed to Medicaid cuts. This opinion is consistent across both urban and rural areas. Most people think funding should increase (42%) or be kept about the same (40%).^{ix}

6 Medicaid reduces health disparities

Over half of Coloradans enrolled in Medicaid are people of color, including 60% of birthing parents. This coverage is associated with earlier prenatal care, higher birthweights, lower infant mortality rates, and improved early childhood health outcomes.ⁱⁱ Medicaid coverage— particularly through Medicaid expansionⁱⁱⁱ— has been key in closing racial health disparities and fostering more equitable health outcomes across Colorado.



Over half of Coloradans enrolled in Medicaid are people of color, including

60%

of birthing parents

ⁱfiles.kff.org/attachment/fact-sheet-medicaid-state-CO

ⁱⁱdefinitivehc.com/resources/healthcare-insights/hospital-payor-mix-state

ⁱⁱⁱcpr.org/2025/03/08/medicaid-cuts-rural-hospitals-risk-of-closure/

^{iv}hcpf.colorado.gov/sites/hcpf/files/HCPF%20CO%20Medicaid%20Insights%20and%20Potential%20Federal%20Reduction%20Impacts-2.28.2025.pdf

^vmedicaid.gov/state-overviews/scorecard/measure/Medicaid-Per-Capita-Expenditures?measure=EX.5&measureView=state&stratification=463&dataView=paintInTime&chart=map&timePeriods=%5B%222022%22%5D

^{vi}files.kff.org/attachment/fact-sheet-medicaid-state-CO

^{vii}rwjf.org/en/insights/our-research/2025/04/expanding-federal-work-requirements-to-age-64-would-increase-medicaid-coverage-losses.html

^{viii}cbpp.org/research/health/36-million-people-at-risk-of-having-health-coverage-taken-away-by-medicaid-work

^{ix}kff.org/medicaid/poll-finding/kff-health-tracking-poll-public-views-on-potential-changes-to-medicaid/

Learn more at medicaidmatters.info

