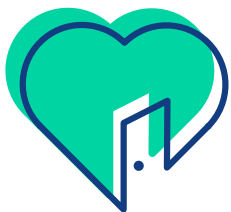




Media Kit for **Colorado Access**



colorado
access

About Colorado Access

Mission

Partner with communities and empower people through access to quality, equitable, and affordable care.

Vision

Healthy communities transformed by the care that people want at a cost we can all afford.

Organizational Overview

As the largest and most experienced public sector health plan in the state, we are a nonprofit organization that works beyond just navigating health services. We focus on meeting our members' unique needs by partnering with providers and community organizations to provide better personalized care through measurable results. Our broad and deep view of our regional and local systems allows us to stay focused on our members' care while we collaborate on measurable and economically sustainable systems that serve them better. Colorado Access has been serving communities in Colorado for 30 years.

Key Facts and Figures

Members Served (Medicaid and CHP+)

More than
500,000
members across the state

Counties Covered (Medicaid and CHP+)

45 counties
spanning urban, rural, and frontier areas

Number of employees

400+

Key Partnerships

Denver Health, Children's Hospital Colorado

Focus Areas

Care coordination,
behavioral health integration,
and community engagement

Unique Initiatives

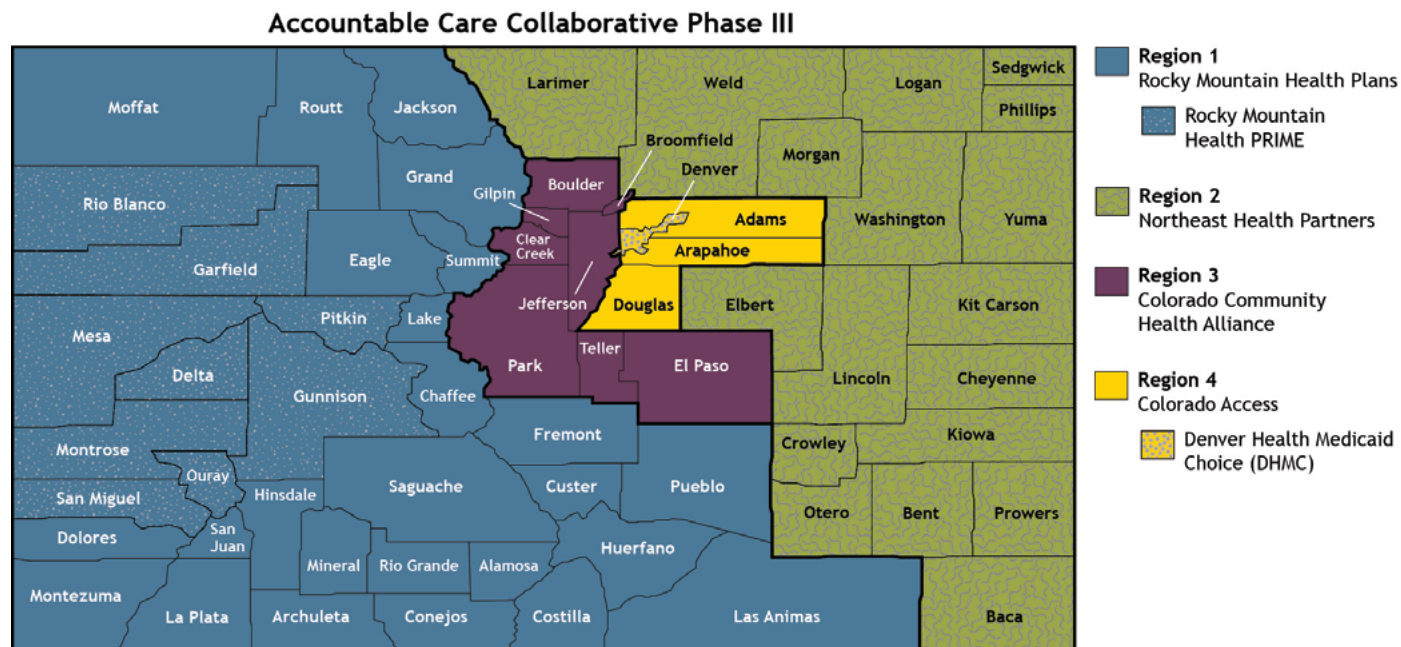
Innovating care delivery to improve outcomes, especially for underserved populations.

Affiliated and related organizations and lines of business

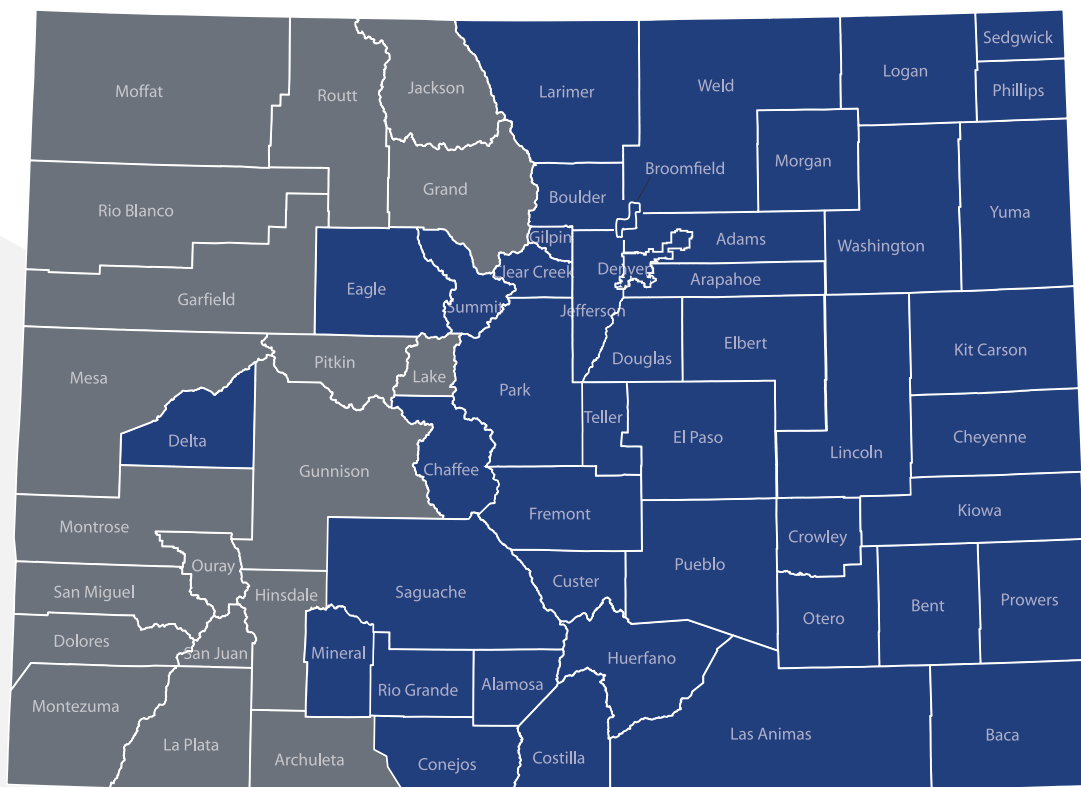
AccessCare, AMES, Colorado Access Foundation, Child Health Plan *Plus* (CHP+), Regional Accountable Entity (RAE) contract with the Colorado Department of Health Care Policy & Financing



Map of coverage area for Colorado Access Regional Accountable Entity (RAE)



Map of coverage area for CHP+ offered by Colorado Access





Our Core Values

Compassion

We act with great care and attention for the people we serve. We are driven by the desire to improve lives and communities. We treat each other with respect and kindness.

Trust

Nothing is more important than the trust of our members, providers, partners and employees. We operate with integrity at all times, and we follow rules and regulations as a matter of principle, not obligation.

Excellence

We are driven by helping those we serve to achieve positive results. We strive to exceed expectations and create a positive experience for our customers and employees. We demonstrate accountability for delivering high performance, strong results, value-added operations and quality service.

Collaboration

We work as a team with our partners in the community. We build on the success and innovation of mission-aligned partners to the benefit of those we serve. We achieve better results when we work together.

Innovation

We find new ways to add value with technology, ideas, programs, services, and tools. We are forward-thinking, seeking ways to transform health care with innovative approaches and proven solutions. We share and apply lessons we learn to continuously improve and grow.

Diversity, Equity, and Inclusion

We value diversity of cultures, backgrounds, and perspectives. We open our minds, we listen to others, and we have the courage to change and grow. We promote a culture in which our employees feel appreciated, accepted, and connected to our mission. We lead and inspire others to create healthy communities and achieve health equity.

Leadership Team

Annie Lee, JD

President and CEO

Dr. William Wright

Chief Medical Officer

April Abrahamson

Chief People Officer and Talent Development Officer

Jaime Moreno

Chief Communications and Member Experience Officer

Ann Edelman, MA, JD

Chief Legal Officer and Vice President of Compliance

Joy Twesigye, MSN, MPP, NP

Vice President, Health Systems Integration



Liz Owens

Vice President of Government Relations

Keenan Freeman

Chief Financial Officer

John Priddy

Vice President of Health Plan Operations

Dana Pepper, MPA, BSN, RN

Vice President of Provider Performance and Network Services




Ashlie Brown

Chief Strategy and Technology Officer

Brand Assets

Social Media

Colorado Access

f [Facebook](#)  [Instagram](#)  [X](#)
in [Linkedin](#)  [YouTube](#)

Colorado Access Foundation

in [Linkedin](#)

Media-Specific Materials

Press Releases

[Read Colorado Access press releases here](#)

Media Contact Information

- media@coaccess.com
- 720-744-5160

